



# CITY OF MONROVIA FY 16/17 BUDGET SUMMARY

## MONROVIA DEMOGRAPHICS

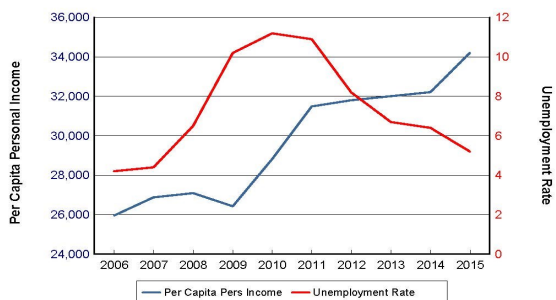
Date of Incorporation	December 15, 1887
Size	13.7 sq miles
Population (as of 1/1/16)	37,531
Median Age	37.9

## ECONOMICS

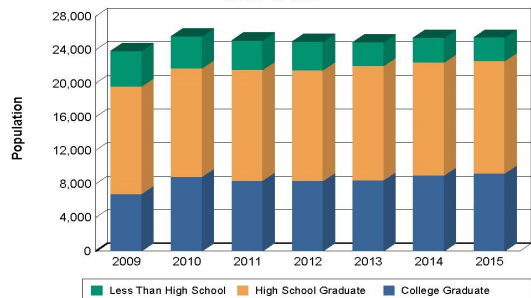
Labor Force	21,200
People Employed	20,400
People Unemployed	4.0%
Average Household Income	\$72,034
Per Capita Personal Income	\$34,209
Average Household Size	2.83
Average SFR Home Sales Value	\$628,427
Total Housing Units	13,976

Source: Source: Dept. of Finance, CA (Jan. 2016)  
Dept. of Employment Development, CA (Aug 2016), US Census (2014) and HDL (2015)

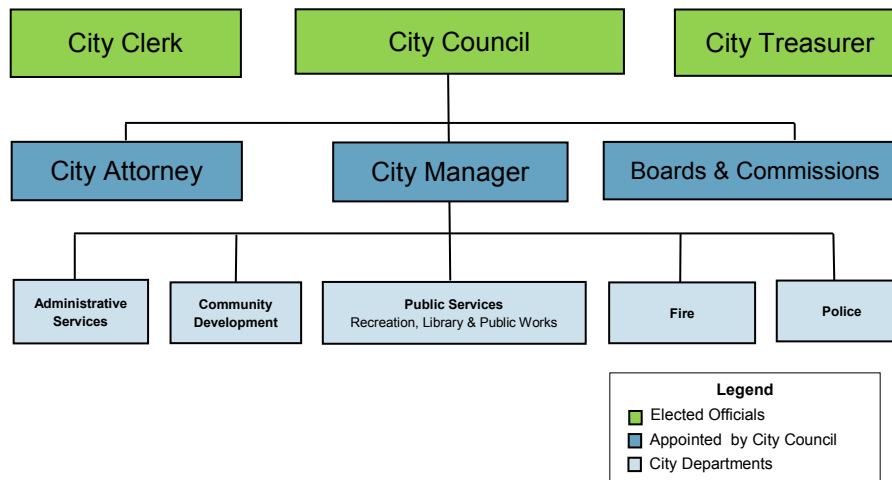
### Personal Income and Unemployment



### Education Level Attained for Population 25 and Over



## ORGANIZATIONAL CHART



## TOP 10 EMPLOYERS

(Number of Jobs)

1. Monrovia School District	572
2. Trader Joe's Company	274
3. The Home Depot	263
4. Ducommon Aerostructures	263
5. Sierra Autocars	235
6. Worley Parsons Group Inc.	193
7. Vinyl Technology	185
8. Monrovia Memorial Hospital	178
9. San Gabriel Valley Newspaper	177
10. Exelis, Inc	176

Source: City of Monrovia Business Services Dept. and Monrovia Unified School District (FY 14/15 Top Employers)

## TAXABLE SALES BY CATEGORY

(In thousands of dollars)

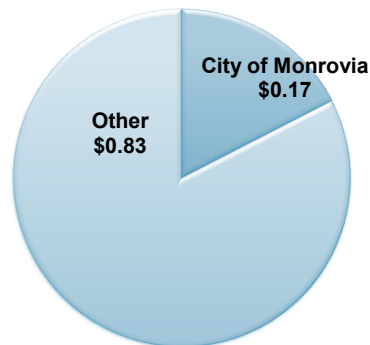
• Apparel Stores	\$29,176
• Food Stores	27,471
• Eating and Drinking Places	94,768
• Building Materials	114,439
• Auto Dealers and Supplies	315,234
• Service Stations	41,535
• Other Retail Stores	99,408
• All Other Outlets	<u>230,679</u>
Total	\$952,711

Source: State of California Board of Equalization and The HdL Companies (2015 Calendar Year)

## THE CITY OF MONROVIA PROPERTY TAX DOLLAR BREAKDOWN

Los Angeles County	\$ 0.2981
Monrovia Unified School District	\$ 0.2048
Educational Aug. Fund Impound	\$ 0.1778
City of Monrovia	\$ 0.1744
Educational Rev. Augmentation Fund	\$ 0.0753
Citrus Community College District	\$ 0.0238
Other	\$ 0.0458

## PROPERTY TAX DOLLAR BREAKDOWN



### DID YOU KNOW?

Monrovia only receives 17 cents of every property tax dollar

## TOP 10 PROPERTY TAXPAYERS

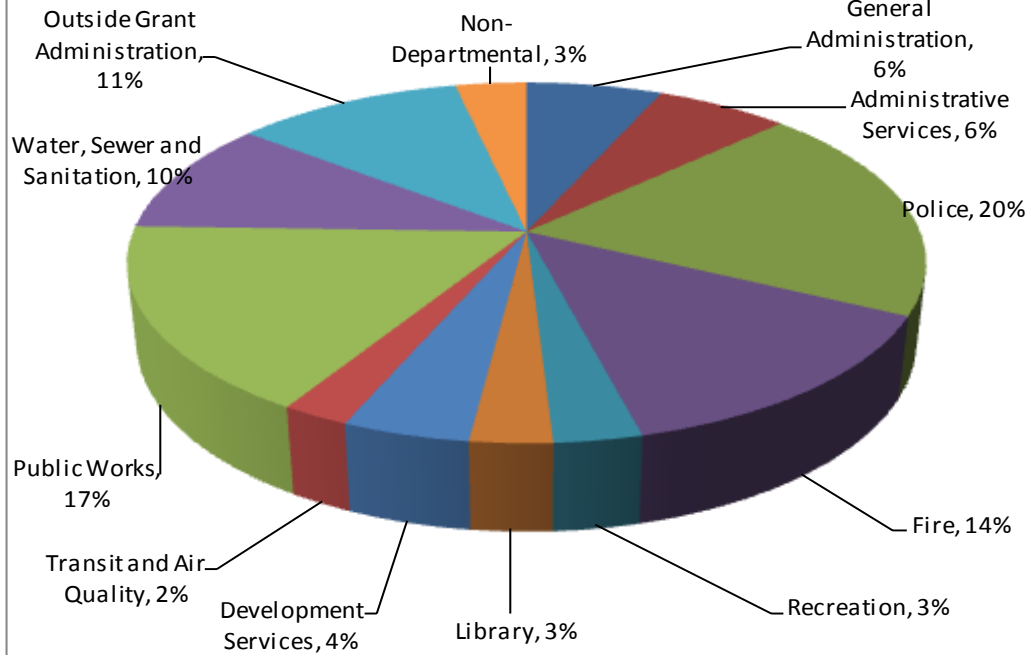
- South Myrtle Monrovia MM LLC
- Foothill Technology Center LLC
- Meile Investment LLC
- Huntington Oaks Delaware Partners LLC
- Monrovia Technology Campus LLC
- PI Properties No. 46 LLC
- S and F Huntington Crossing I LLC
- BRE HV Properties LLC
- 723 EHD LLC
- Nationwide Monrovia Market Place LLC

Source: HDL Coren & Cone (FY 15/16 Top 10 Tax Payers)

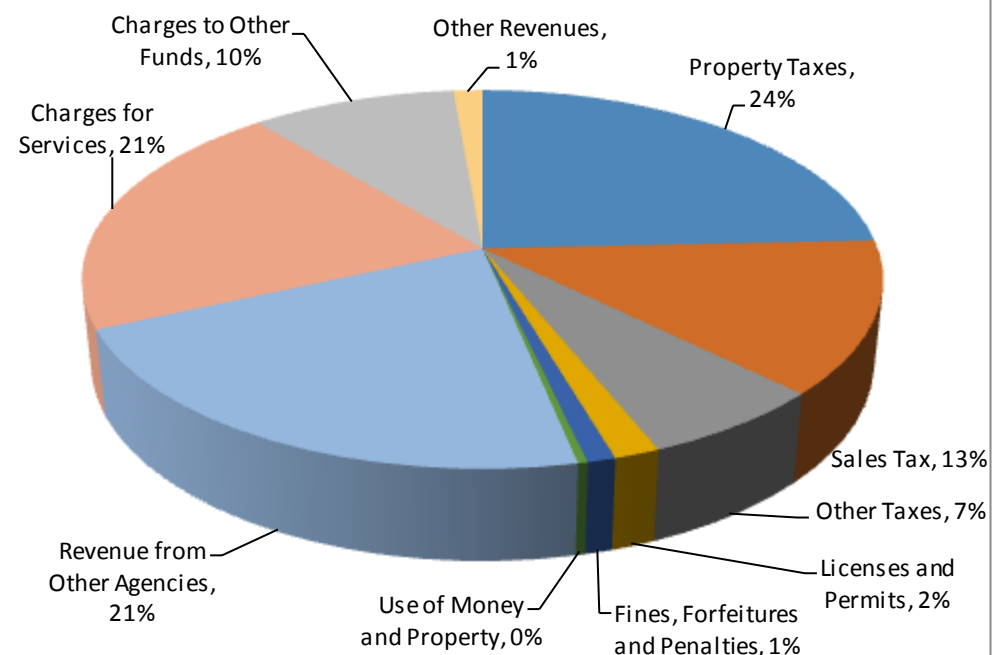


# CITY OF MONROVIA FY 16/17 BUDGET SUMMARY

## Areas of Expenditures



## Sources of Revenue



AREAS OF EXPENDITURES	AMOUNT	% OF TOTAL
<b>GENERAL ADMINISTRATION:</b> Expenditures for general administration include the City Manager's Office, City Clerk, City Council, City Treasurer, City Attorney, and Human Resources.	\$5,351,466	6%
<b>ADMINISTRATIVE SERVICES:</b> Expenditures for the Administrative Services Department include Finance and Information Systems (IS) operations.	\$5,249,148	6%
<b>POLICE:</b> Expenditures for police protection, crime investigation and prevention, traffic safety and animal control services.	\$16,113,075	20%
<b>FIRE:</b> Expenditures for fire suppression, prevention, investigation, and emergency medical (paramedic) service.	\$11,297,121	14%
<b>RECREATION SERVICES:</b> Expenditures for recreation programs at the Community Center and various parks for youth, adults and senior citizens.	\$2,504,227	3%
<b>LIBRARY:</b> Expenditures for maintenance of the Library and its collection. Also included are reference services, children's programs and outreach to shut-ins.	\$2,343,246	3%
<b>DEVELOPMENT SERVICES:</b> Expenditures for building inspection, plan checking, zone administration, long range planning, and business licensing.	\$3,630,600	4%
<b>TRANSIT AND AIR QUALITY:</b> Expenditures for Monrovia Transit, Dial-A-Ride transportation system and other public transit and ridesharing programs.	\$1,928,842	2%
<b>PUBLIC WORKS:</b> Expenditures for the maintenance of City buildings and public improvements, such as streets, sidewalks, parks, street lighting system and environmental services.	\$13,867,522	17%
<b>WATER, SEWER AND SANITATION:</b> Expenditures for design, construction and maintenance of the City's water, sewer and storm drain systems.	\$8,401,229	10%
<b>OUTSIDE GRANT ADMINISTRATION:</b> Expenditures for outside public safety agencies for which the City performs financial management fiduciary duties.	\$9,016,945	11%
<b>NON-DEPARTMENTAL:</b> Expenditures for the payment of principal and interest on bonds and items not logically costed in other departments.	\$2,801,393	3%
<b>TOTAL BUDGET</b>	<b>\$82,504,814</b>	<b>100%</b>
Less: Intergov't Service Fund Charges	(\$7,534,644)	
	<b>\$74,970,170</b>	

SOURCES OF REVENUE	\$ AMOUNT	% OF TOTAL
<b>PROPERTY TAXES:</b> Revenues are received from tax levies applied to property value, levies against secured and unsecured property rolls, and penalties and interest on delinquent taxes.	\$18,847,041	24%
<b>SALES TAX:</b> Revenues received from sales taxes imposed on goods and services in the City. The City receives 1 % of all taxable sales and 1/2% for police and fire operations.	\$10,115,866	13%
<b>OTHER TAXES:</b> Revenue derived from property transfer, business license, transient occupancy, franchise fees, and other various taxes.	\$5,054,155	7%
<b>LICENSES AND PERMITS:</b> Revenues received from the issuance of licenses and permits within the City (e.g., animal licenses, building permits, etc.).	\$1,235,624	2%
<b>FINES, FORFEITURES, AND PENALTIES:</b> Monies derived from the City's share of fines and penalties imposed by the courts for vehicle code and other statutory violations.	\$762,450	1%
<b>USE OF MONEY AND PROPERTY:</b> Revenues received from land, building, and equipment rentals and interest earnings from the investment of City funds.	\$263,598	0%
<b>REVENUE FROM FEDERAL, STATE &amp; OTHER AGENCIES:</b> Revenues include monies received by the City, the distribution of which is controlled by some other agency (also known as subventions and grants).	\$16,677,144	21%
<b>CHARGES FOR SERVICES:</b> Revenue from all charges for specific services provided by the City (e.g., engineering and plan check, park rental fees, water service charges, etc)	\$16,051,534	21%
<b>CHARGES TO OTHER FUNDS:</b> Revenue from all charges to other departments within the City ( e.g., charges to cover insurance costs, technology support, facility maintenance, and vehicle replacements).	\$7,534,644	10%
<b>OTHER REVENUES:</b> Miscellaneous and one-time revenues not falling into any other classification, including the sale of property and loan proceeds.	\$1,064,130	1%
<b>TOTAL</b>	<b>\$77,606,186</b>	<b>100%</b>